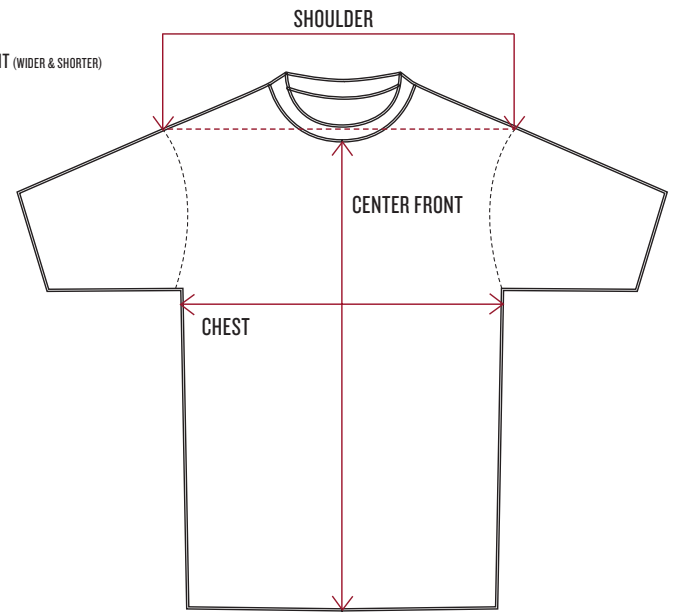
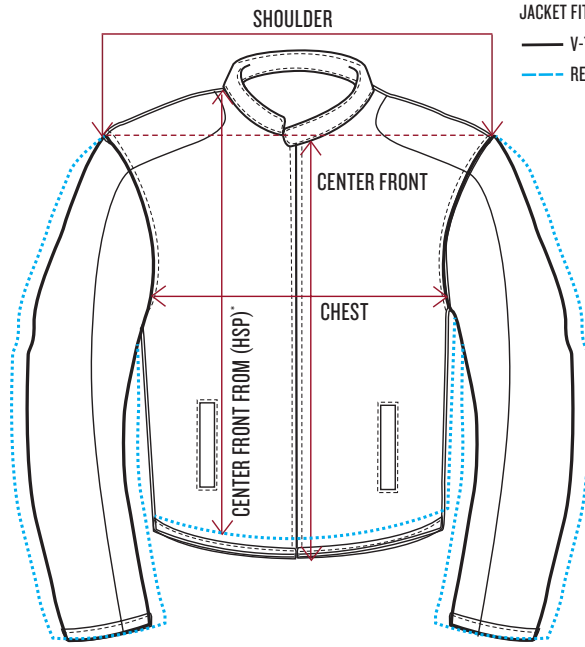
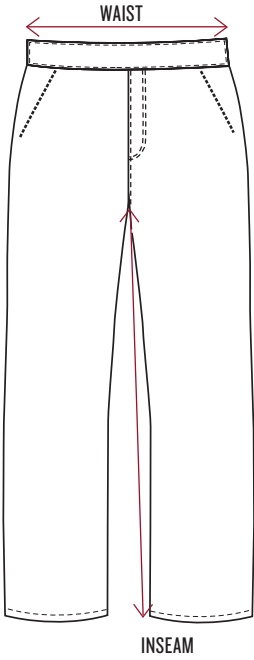


# APPAREL SIZE CHARTS



MEN'S V-TWIN FIT JACKETS												
SIZE	CHEST		SHOULDER		LEATHER CENTER FRONT		TEXTILE CENTER FRONT		SPIRIT JKT CENTER FRONT		SPRINGFIELD CENTER FRONT	
	IN	CM	IN	CM	IN	CM	IN	CM	IN	CM	IN	CM
XS	40.2 - 41.7	102 - 106	20.1	51	21.3	54	21.7	55	-	-	-	-
S	43.3 - 44.9	110 - 114	20.5	52	21.5	55	22	56	24	61	22	56
M	46.5 - 48	118 - 122	20.9	53	22	56	22.5	57	24.4	62	22.5	57
L	49.6 - 51.2	126 - 130	21.3	54	22.5	57	23	58	24.8	63	23	58
L-TALL	49.6 - 51.2	126 - 130	21.5	54.5	-	-	-	-	26.4	67	24.4	62
XL	53.5 - 55.1	136 - 140	22	56	23	59	23.5	60	25.6	65	23.5	60
XL-TALL	53.5 - 55.1	136 - 140	22.2	56.5	-	-	-	-	27.2	69	25.2	64
2XL	57.5 - 59	146 - 150	22.5	58	24	61	24.4	62	26.4	67	24.4	62
2XL-TALL	57.5 - 59	146 - 150	23	58.5	-	-	-	-	27.9	71	26	66
3XL	61.4 - 63	156 - 160	23.5	60	24.5	63	25.2	64	27.2	69	25.2	64
3XL-TALL	61.4 - 63	156 - 160	24	60.5	-	-	-	-	28.7	73	26.8	68
4XL	65.4 - 66.9	166 - 170	24.4	62	25.6	65	26	66	27.9	71	26	66
5XL	69.3 - 70.9	176 - 180	25.2	64	26.5	67	26.8	68	28.7	73	26.8	68

MEN'S FOOTWEAR		
USA	EU	UK
7	39	6
8	41	7
9	42	8
10	43	9
11	44.5	10
12	46	11
13	47	12

WMN'S FOOTWEAR		
USA	EU	UK
5	35	2.5
6	36	3.5
7	37.5	4.5
8	38.5	5.5
9	40	6.5
10	41.5	7.5
11	42.5	8.5

MEN'S JEANS						
INSEAM (IN)	WAIST (IN)					
	32	30	32	34	36	38
34	30	32	34	36	38	40

WOMEN'S JEANS						
INSEAM (IN)	WAIST (IN)					
	34	26	27	28	29	30

Tall sizes available on Spirit Jacket & Springfield Mesh Jacket for sizes L-3XL. Sleeve length & body length increase by 4cm.

MEN'S V-TWIN FIT VESTS						
SIZE	CHEST		SHOULDER		CENTER FRONT	
	IN	CM	IN	CM	IN	CM
S	42	106	15	38	13.2	33.5
M	45	114	15.4	39	14.4	36.5
L	48	122	15.7	40	14.8	37.5
XL	52	132	16.5	42	15.6	39.5
2XL	56	142	17.3	44	16.3	41.5
3XL	60	152	18.1	46	17.1	43.5
4XL	64	162	18.9	48	17.9	45.5
5XL	68	172	19.7	50	18.7	47.5

MEN'S RELAXED FIT JACKETS						
SIZE	CHEST		SHOULDER		CENTER FRONT FROM HSP*	
	IN	CM	IN	CM	IN	CM
S	50	127	20.4	51.8	24.5	62
M	52.5	133.3	21	53.3	25	63.5
L	58	147.3	22	55.9	26	65.5
XL	62.5	158.8	23	58.4	26.5	67
2XL	66	167.6	24	61	27	69
3XL	68	172.7	24.5	62.2	27.5	70

\*High Shoulder Point (HSP). Relaxed fit is wider in the shoulders, body and sleeve and shorter in body length than the V-Twin fit.

MEN'S CHAPS				
SIZE	WAIST		INSEAM	
	IN	CM	IN	CM
M	35	89	33	84.5
L	38	97	33	84.5
XL	41	105	33	84.5
2XL	44.5	113	33	84.5
3XL	47.5	121	33	84.5
4XL	51	129	33	84.5
5XL	54	137	33	84.5

WOMEN'S V-TWIN FIT JACKETS						
SIZE	CHEST		SHOULDER		CENTER FRONT	
	IN	CM	IN	CM	IN	CM
XS	37	94	17	43	19.7 - 22	50 - 56
S	39.5	100	17.3	44	20.5 - 22.8	52 - 58
M	41.5	106	17.7	45	21.3 - 23.6	54 - 60
L	44	112	18.1	46	22 - 24.4	56 - 62
XL	47	120	18.9	48	22.8 - 25.2	58 - 64
2XL	50.4	128	19.7	50	23.6 - 26	60 - 66
3XL	53.5	136	20.5	52	24.4 - 26.8	62 - 68
1W	48.4	123	19.3	49	22.8	58
2W	51.6	131	20.1	51	23.6	60
3W	54.7	139	20.9	53	24.4	62

WOMEN'S V-TWIN FIT VESTS						
SIZE	CHEST		SHOULDER		CENTER FRONT	
	IN	CM	IN	CM	IN	CM
XS	34.5	88	10.2	26	11.2	28.5
S	37	94	10.6	27	12	30.5
M	39.5	100	11	28	12.8	32.5
L	42	106	11.4	29	13.6	34.5
XL	45	114	12.2	31	14.4	36.5
2XL	48	122	13	33	15.16	38.5
3XL	51	130	13.8	35	15.9	40.5
1W	46	117	12.6	32	14.4	36.5
2W	49	125	13.4	34	15.2	38.5
3W	52.5	133	14.2	36	15.9	40.5

WOMEN'S CHAPS				
SIZE	WAIST		INSEAM	
	IN	CM	IN	CM
S	35.5	90	33	83.5
M	37	94	33	83.5
L	40	102	33	83.5
XL	43	110	33	83.5
2XL	46.5	118	33	83.5
3XL	50	126	33	83.5
4XL	53	134	33	83.5
5XL	56	142	33	83.5

RAINSUIT- JACKET						
SIZE	CHEST		SHOULDER		CENTER FRONT (INCLUDES COLLAR)	
	IN	CM	IN	CM	IN	CM
XS	45	114	21.5	54	26.5	67
S	48	122	21.5	55	26.8	68
M	51.2	130	22	56	27.2	69
L	54.5	138	22.5	57	27.6	70
XL	58.3	148	23	59	28.3	72
2XL	62	158	24	61	29.1	74
3XL	66.1	168	24.5	63	29.9	76
4XL	70.1	178	25.6	65	30.7	78
5XL	74	188	26.5	67	31.5	80

RAINSUIT- PANTS				
SIZE	WAIST (RELAXED)		INSEAM	
	IN	CM	IN	CM
XS	33	84	31.9	81
S	34.5	88	32.3	82
M	36.2	92	32.7	83
L	39.4	100	33.3	84.5
XL	42.5	108	34	86
2XL	45.5	116	34.5	87.5
3XL	50	124	35	89
4XL	52	132	35.6	90.5
5XL	55.1	140	36.2	92

HELMETS			
SIZE	HAT SIZE	IN	CM
XS	6 3/4	21.3	54
S	6 7/8 - 7	21.7 - 22	55-56
M	7 1/8 - 7 1/4	22.4 - 22.8	57-58
L	7 3/8 - 7 1/2	23.2 - 23.6	59-60
XL	7 5/8 - 7 3/4	24 - 24.4	61-62
2XL	7 7/8 - 8	24.8 - 25.2	63-64
3XL	8 1/8 - 8 1/4	25.6 - 26	65-66
4XL	8 3/8 - 8 1/2	26.4 - 26.8	67-68

MEN'S T-SHIRTS & POLOS						
SIZE	CHEST		SHOULDER		CENTER FRONT	
	IN	CM	IN	CM	IN	CM
S	37	94	18.5	46.5	24	60.5
M	41	104	19	48	24	61.5
L	45	114	19.5	49.5	24.5	62.5
XL	49	124	20	51	25	63.5
2XL	53	134	20.5	52.5	25.5	64.5
3XL	56.5	144	21.5	54	26	65.5
4XL	62.5	159	22	56.25	26.5	67
5XL	68.5	174	23	58.5	27	68.5

MEN'S SHIRTS & ZIP THRU									
SIZE	CHEST		SHOULDER		CENTER FRONT		ZIP THRU CENTER FRONT		
	IN	CM	IN	CM	IN	CM	IN	CM	
S	40	102	19	48.5	27	69	23.5	59.5	
M	44	112	19.5	50	27.5	70	24	60.5	
L	48	122	20.5	51.5	28	71	24	61.5	
XL	52	132	21	53	28.5	72	24.5	62.5	
2XL	56	142	21.5	54.5	28.5	73	25	63.5	
3XL	60	152	22	56	29	74	25.5	64.5	

MEN'S 1901 FASHION FIT T-SHIRTS						
SIZE	CHEST		SHOULDER		CENTER FRONT	
	IN	CM	IN	CM	IN	CM
S	39	99	17	43	23.5	59.5
M	41	104	17.5	44.5	24.3	62
L	43	110	18	46	25.2	64
XL	46	117	18.7	47.5	26.1	66.5
2XL	49	124	19.5	49.5	27	68.5
3XL	52	132	20.3	51	27.9	70.8

A closer fit with slimmed down shoulder and sleeve. Chest width is larger than our other tees, however fit narrows from chest, to waist, to hem, giving an overall slimmer fit.

WOMEN'S SHIRTS						
SIZE	CHEST		SHOULDER		CENTER FRONT	
	IN	CM	IN	CM	IN	CM
XS	34.6	88	14.7	37.5	23.6	60
S	37	94	15.3	39	24	61
M	39.3	100	15.9	40.5	24.4	62
L	41.7	106	16.5	42	24.8	63
XL	44.8	114	17.3	44	25.1	64
2XL	48	122	18.1	46	25.5	65
3XL	51.1	130	18.8	48	25.9	66

WOMEN'S HOODIES & ZIP THRU						
SIZE	CHEST		SHOULDER		CENTER FRONT	
	IN	CM	IN	CM	IN	CM
XS	35.4	90	17.1	43.5	22.4	57
S	37.7	96	17.7	45	22.6	58
M	40.1	102	18.5	46.5	23.2	59
L	42.5	108	18.8	48	23.6	60
XL	45	116	19.7	50	24	61
2XL	48.8	124	20.5	52	24.4	62
3XL	51.9	132	21.5	54	24.8	63

WOMEN'S T-SHIRTS- RELAXED FIT								
SIZE	CHEST		WAIST		SHOULDER		CENTER BACK	
	IN	CM	IN	CM	IN	CM	IN	CM
XS	33.8	86	30.3	77	15.3	39	23.6	60
S	36.2	92	32.7	83	15.9	40.5	24	61
M	38.5	98	35	89	16.5	42	24.4	62
L	40.9	104	37.4	95	17	43.5	24.8	63
XL	44	112	40.6	103	17.9	45.5	25.7	65.5
2XL	47.2	120	43.7	111	18.7	47.5	26.1	66.5
3XL	50	128	46.8	119	19.5	49.5	26.6	67.5

WOMEN'S T-SHIRTS- CLOSE FIT (STRETCH FABRIC)								
SIZE	CHEST		WAIST		SHOULDER		CENTER BACK	
	IN	CM	IN	CM	IN	CM	IN	CM
XS	33.8	86	28.7	73	15.3	39	23.6	60
S	36.2	92	31.1	79	15.9	40.5	24	61
M	38.5	98	33.5	85	16.5	42	24.4	62
L	40.9	104	35.8	91	17	43.5	24.8	63
XL	44	112	39.9	99	17.9	45.5	25.7	65.5
2XL	47.2	120	42.9	109	18.7	47.5	26.1	66.5
3XL	50	128	46.8	119	19.5	49.5	26.6	67.5

WOMEN'S TANKS- RELAXED FIT							
SIZE	CHEST		WAIST		CENTER BACK		
	IN	CM	IN	CM	IN	CM	
XS	33	84	29.1	74	23.6	60	
S	35.4	90	31.4	80	24.4	62	
M	37.7	96	33.8	86	25.1	64	
L	40.1	102	36.2	92	25.9	66	
XL	43.3	110	39.3	100	26.7	68	
2XL	46.4	118	42.5	108	27.5	70	
3XL	49.6	126	45.6	116	28.3	72	

WOMEN'S TANKS- RIBBED FABRIC							
SIZE	CHEST		WAIST		CENTER BACK		
	IN	CM	IN	CM	IN	CM	
XS	31.5	80	27.2	69	24	60.5	
S	32.7	83	29.5	75	24.1	61.5	
M	36.2	92	31.9	81	24.5	62.5	
L	38.5	98	34.2	87	25	63.5	
XL	41.7	106	37.4	95	25.9	66	
2XL	45	114	40.6	103	26.5	67	
3XL	48	122	43.7	111	26.8	68	

JUNIOR'S BODYSUIT						
MONTHS	3-6		6-12		12-18	
	IN	CM	IN	CM	IN	CM
Chest Diameter	9	23	9.5	24	10	25
Body Length	15.5	40	16.5	42	17.5	44
Waist Circumference	18	46	19	48	20	50

JUNIOR'S TEE								
YEARS	2-3		3-4		4-5		5-6	
	IN	CM	IN	CM	IN	CM	IN	CM
Chest	12.2	31	13	33	13.8	35	14.6	37
Shoulder	11.4	29	11.6	29.5	11.8	30	12	30.5
Center Front	11	28	12.2	31	13.4	34	14.6	37

BELTS		
SIZE	WAIST SIZE	
	IN	CM
S	30 - 34	76 - 86
M	34 - 38	86 - 96
L	38 - 42	96 - 106
XL	42 - 46	106 - 116
2XL	46 - 50	116 - 126

PART NUMBER SIZE GUIDE- APPAREL*															
XS	S	M	L	LT	XL	XLT	2XL	2XLT	3XL	3XLT	4XL	5XL	1W	2W	3W
01	02	03	06	08	09	11	12	13	14	20	15	16	17	18	19

PART NUMBER SIZE GUIDE- FOOTWEAR*											
Size	05	06	07	08	09	10	11	12	13		
Part #	05	06	07	08	09	10	11	12	13		

\*Based on the size you are ordering, add the above number to the end of the item's part number. LT, XLT, 2XLT, 3XLT are tall sizes.

\*Based on the size you are ordering, add the above number to the end of the item's part number.

PART NUMBER SIZE GUIDE- ROKKER® JEANS*												
Waist (in)	30	32	34	36	38	40	30	32	34	36	38	40
Inseam Length (in)	32	32	32	32	32	32	34	34	34	34	34	34
Part #	3032	3232	3432	3632	3832	4032	3034	3234	3434	3634	3834	4034

\*Based on the size you are ordering, add the above number to the end of the item's part number.